



FAST DATA SEARCH

SEARCH PORTLET FOR BEA WEBLOGIC 8.1

version 3.2.1

MODULE GUIDE

Copyright

Copyright © 1997-2004 by Fast Search & Transfer, Inc. and its associated companies and licensors. All rights reserved. Fast Search & Transfer may hereinafter be referred to as FAST.

Information in this document is subject to change without notice. The software described in this document is furnished under a license agreement. The software may be used only in accordance with the terms of the agreements. No part of this document may be reproduced, stored in a retrieval system, or transmitted in any form or any means, electronic or mechanical, including photocopying and recording, for any purpose other than the purchaser's use, without the written permission of FAST.

Trademarks

FAST is a registered trademark of Fast Search & Transfer. All rights reserved.

FAST Search, and FAST Data Search are trademarks of Fast Search & Transfer. All rights reserved.

Sun, Sun Microsystems, all SPARC trademarks, Java and Solaris are trademarks or registered trademarks of Sun Microsystems, Inc. in the United States and other countries. All rights reserved.

Netscape is a registered trademark of Netscape Communications Corporation in the United States and other countries.

Microsoft, Windows, Visual Basic, and Internet Explorer are registered trademarks of Microsoft Corporation.

Red Hat is a registered trademark of Red Hat, Inc. All rights reserved.

Linux is a registered trademark of Linus Torvalds. All rights reserved.

UNIX is a registered trademark of The Open Group. All rights reserved.

AIX is a registered trademark of International Business Machines Corporation. All rights reserved.

HP and the names of HP products referenced herein are either trademarks and/or service marks or registered trademarks and/or service marks of HP and/or its subsidiaries.

BEA and WebLogic are registered trademarks of BEA Systems, Inc. BEA WebLogic Platform is a trademark of BEA Systems, Inc.

All other trademarks and copyrights referred to are the property of their respective owners.

Restricted Rights Legend

Software and accompanying documentation are provided to the U.S. government in a transaction subject to the Federal Acquisition Regulations with Restricted Rights. Use, duplication, or disclosure of the software by the government is subject to restrictions as set forth in FAR 52.227-19 Commercial Computer Software-Restricted Rights (June 1987).

Contents

	FAST Support.....	v
	About this Guide	vii
Chapter 1	Product Overview	1
	Introduction.....	1
	Supported Features.....	1
	Supported Versions	1
Chapter 2	Installation	3
	Installing the Portlet.....	3
	Adding the Portlet to a Web Application	4
	Testing the Portlet	5
Chapter 3	Configuration	7
	Modifying the portlet properties	7
	Customizing the portlet.....	9
Chapter 4	Operation and Verification	11
	Simple search.....	11
	Advanced search.....	12
	Example search.....	13

FAST Support

Website

Please visit us at:

<http://www.fastsearch.com/>

Contacting FAST

Fast Search & Transfer Inc.

Wellesley Gateway

93 Worcester Street

Wellesley, MA 02481-9181 USA

Tel: +1 (781) 304-2400 (8:30am - 5:30pm EST)

Fax: +1 (781) 304-2410

Technical Support and Licensing Procedures

E-mail: fds-support@fastsearch.com

Product Training

E-mail: fastuniversity@fastsearch.com

Sales

E-mail: sales@fastsearch.com

About this Guide

Purpose of this Guide

This guide describes how to install and use the Search Portlet for BEA WebLogic 8.1. It includes the following chapters:

- Chapter 1 *Product Overview* provides a brief introduction to the product and its features.
- Chapter 2 *Installation* provides steps for installing the software and using the portlet in the WebLogic environment.
- Chapter 3 *Configuration* describes the portlet properties and discusses briefly how to customize the portlet by modifying the JSPs.
- Chapter 4 *Operation and Verification* describes the available search features of the portlet and provides an example of a search.

Audience

This guide provides information for web developers who need to use the Search Portlet for BEA WebLogic 8.1.

Conventions

This guide uses the following textual conventions:

- Terminal output, contents of plaintext ASCII files will be represented using the following format:
Answer yes to place the node in the known_hosts file.
- Terminal input from operators will be in the same but bold format:
chmod 755 \$HOME
- Input of some logic meaning, will be enclosed in <> brackets:
setup_<OS>.tar.gz

where <os> represents a specific operating system that must be entered.

- URL's, directory paths, commands and the names of files, tags, and fields in paragraphs appear in the following format:

The default home directory is the *C:\DataSearch* directory.

- User Interface page/window texts, buttons, and lists appear in the following format:
Click **Next** and the **License Agreement** screen is displayed.
- *\$FASTSEARCH* (UNIX) or *%FASTSEARCH%* (Windows) refer to an environment variable set to the directory where FAST Data Search is installed.

Product Overview

Introduction

The Search Portlet for BEA WebLogic 8.1 allows a WebLogic web application to query and process search results from FAST Data Search. You can use the portlet as provided or modify the user interface to comply with your company preferences and policies.

Supported Features

- Simple installation for use in Weblogic Workshop and Weblogic Portal Administration.
- Configurable preferences to customize the portlet.
- Access to many search features in FAST Data Search.
- Java Server Pages (JSPs) that can be customized for the application.

Supported Versions

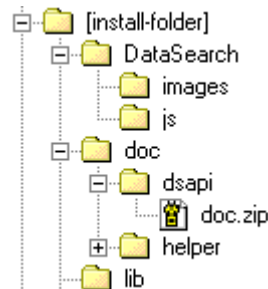
- BEA Weblogic Platform 8.1
- FAST Data Search 3.2

Installing the Portlet

The portlet code is distributed in a zip file named **FDSBEAPortlet.zip**.

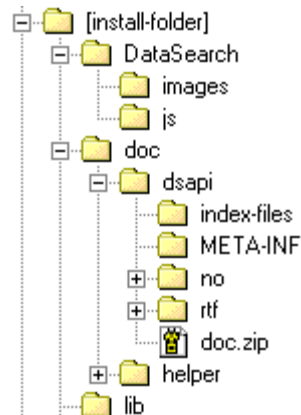
- 1 Unzip the package to a location accessible from your Workshop IDE, in this example **[install-folder]**.

The resulting structure is shown here:



- 2 (Optional) To use the Fast Search API Javadoc, unzip the file **doc/dsapi/doc.zip** into **[install-folder]**.

The resulting structure is shown here:



The contents of the zip file is as follows:

Folder	Contents
DataSearch/search.portlet	the main portlet file
DataSearch/search.portlet.full	the main portlet file, with all available preferences
DataSearch/search.jsp	the main JSP of the portlet
DataSearch/clusters.jspf	file that displays top concepts of the retrieved documents
DataSearch/style.css	style sheet used by the search JSP
DataSearch/images/*.gif	various images for the GUI
DataSearch/js/*.gif	various images for tree-based navigation of categories
DataSearch/js/*.js	Javascripts used with the search page
lib/xmlrpc-1.1.jar	library used for communicating with a Data Search Server for config info
lib/dsapi.jar	main API for performing a search and traversing the results
lib/fast_portlet.jar	helper classes for the search page
doc/WebLogic_Portal_V321.pdf	this document
doc/javadoc/dsapi	Javadoc for the FAST Data Search Java API
doc/javadoc/helper	Javadoc for the helper classes

Adding the Portlet to a Web Application

- 1 Copy or import files to your portal project in Workshop as described in the following table:

Package content	Copy or import into:
DataSearch folder	<PORTAL_APP>/<project>/portlets
lib folder	<PORTAL_APP>/WEB-INF/lib

- 2 Save your project files.

Testing the Portlet

Test the portlet from the Workshop IDE as described in the following:

- 1** Create a new portal, or identify an existing portal on which you want to use the portlet.
- 2** Drag and drop the search portlet onto the empty page of the new portal, or onto a page on the existing portal. Save your files.
- 3** Select the portal by clicking on it, and then select Portal > Open Current Portal from the main menu bar. The portal with the new portlet is displayed in a web browser window.

Modifying the portlet properties

In order to perform searches with the portlet, you need access to a FAST Data Search installation. If you want to change this and other configurable properties of the portlet, go to the Weblogic Portal Administration interface, as described in the following:

- 1 Login to the portal administration interface.
- 2 Select the portal to which you copied and saved the FAST Data Search portlet in the Workshop IDE.
- 3 Add the portlet to an existing page, or create a new page to which the portlet is added.
- 4 Select the desktop that the page is contained in, and select View Desktop. The portlet will now display on the page where you placed it.

The following is a list of preferences that can be modified for the search portlet in order to modify its behavior.

Note! All preferences from DataSearchHost to and including SortFields are directly available in the administration GUI for direct configuration. The remaining preferences must be added manually with the exact names/cases as shown in the table. This is due to a known issue with the BEA Weblogic Portal product

(see <http://e-docs.bea.com>). The portlet works even if these are not added, using the default values shown in the table.

Preference	Description	Default value
DataSearchHost	The fully qualified host name of the FAST Data Search installation.	localhost
DataSearchPort	The port number for accessing the Config server.	16005
Logo	The name of an image file to use as logo. Must be located in the image directory.	fast_qt.gif
DataFields	A list of fields to be displayed with each search result.	title, body, url, modified, size
MetaFields	A list of meta fields to display with each search result.	rank, collection
ShowCategories	If true, categories of the result set are displayed.	true
CategoryField	The field to search for categories.	urls
AllowSorting	If true, the user can specify sorting criteria with a search.	true
SortFields	A list of fields that is sortable. Comma first makes sure no field is selected by default.	,modified, size
ShowAdvanced	If true, the advanced search options are available.	true
Cluster	The search engine cluster to search.	webcluster
AllowSelectCollection	If true, the user can select which collection to search in.	true
DefaultCollection	The name of the collection to search in	""
ShowLeafs	If true, also show nodes of the category tree that only has a single document.	true
ShowConcepts	If true, show top concepts of the search results.	true
ConceptMinTerms	The minimum number of terms in identified concepts.	2

Preference	Description	Default value
ConceptDocCount	The maximum number of search results to use for identifying concepts.	20
ConceptMaxLength	The maximum character length of concepts.	100
ConceptOrderByName	If true, order the concepts alphabetically, rather than score.	false
ShowDrillDown	If true, drill down navigators are displayed.	true
AutoResubmitQuery	If true, resubmits query when there are 0 hits and available query transformations.	false
ShowActualNavDocCounts	If true, shows the number of documents for each drill down link.	false

Customizing the portlet

In addition to the portlet preferences, you can modify the portlet by changing the source JSP to obtain a different look and feel, or behavior. Consult the available Javadoc for the search API of FAST Data Search and the helper classes.

[install-folder]\doc\dsapi\index.html

[install-folder]\doc\helper\index.html

Chapter 4

Operation and Verification

If the portlet preferences are set with default values, the portlet is displayed on the screen as follows:



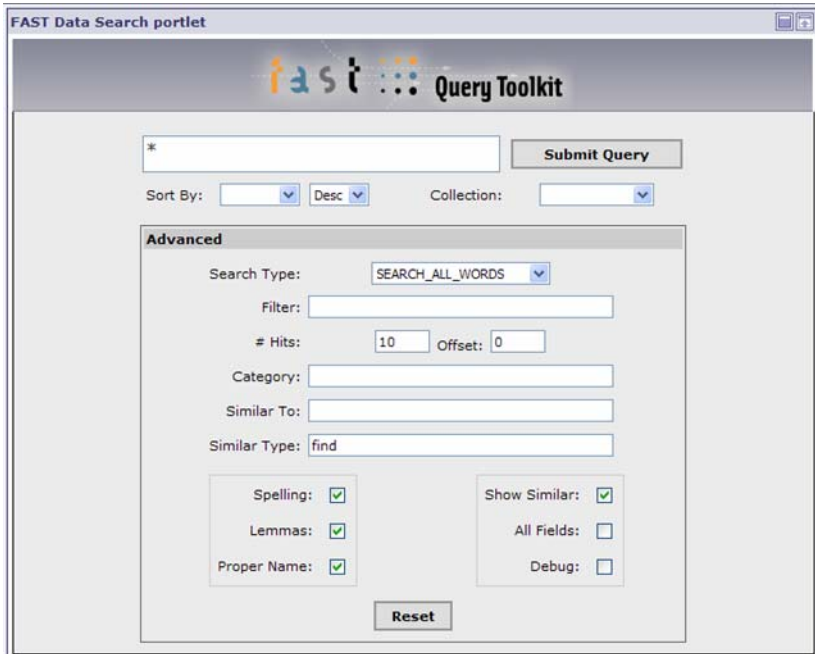
Simple search

To perform a simple search, do the following:

- 1 Enter one or more search terms in the main input field, replacing the '*'.
- 2 If desired, select a Sort by criterion to sort results by values of certain fields. Also choose descending (Desc) or ascending sort order.
- 3 If desired, select a particular Collection in which to search. By default, all available collections are searched.
- 4 Click Submit Query.

Advanced search

If you want more control of the search, click on the Advanced link to access additional search features. The image below shows the search portlet with Advanced features visible.



You can use the following features to use to modify your query:

Table 4-1

Search type	Decide whether you want to perform an AND'ed, OR'ed, phrased, or advanced search query. The latter allows you to use logical operators like AND, OR, ANDNOT and parenthesis with your search.
Filter	You can add filter terms to your query. These will limit the search results as ordinary query terms, but will not be subject to linguistic analysis such as spell checking. You can add '+' or '-' in front of filter terms to specify whether or not the terms will be included in the retrieved documents.
Hit and offset	You can specify how many hits you want returned, and the offset into the results set.
Category	A category that the retrieved documents should belong to.

Table 4-1

Similar to and Similar type	A document vector that the retrieved documents should be similar to. Consult the FAST Data Search Integration Guide for details on this feature. 'Similar type' may be either 'find', 'exclude', or 'refine'.
Spelling	If checked, a spell check is performed on the search terms and spelling corrections are suggested.
Lemmas	Perform search in the lemmatized version of a content field if checked.
Proper name	Proper name recognition is performed on search terms if checked.
Show Similar	Provide 'Show similar' search links with each search result if checked.
All fields	Display all fields with each search result if checked.
Debug	Display debug information if checked.

Example search

Searching with the query term 'basketball' gives the results as displayed below.

The screenshot shows a search results page with the following components:

- Categories:** A list of categories with a search icon and a 'Reset Categories' button.
- Navigators:** Includes a language dropdown (set to 'en'), a character set dropdown, a document size dropdown, and a 'Reset All Drilldown' button.
- Clusters:** A list of top concepts with their respective counts: buyer protection (4.99), protection review (4.99), top stories (4.93), full coverage (3.66), and team sports (2.19).
- Search Results:** A list of 113 results found in 0.512s. The first four results are:
 - 1.** title: Basketball - Team Sports - Sports and Outdoors - Compare Prices, Read Reviews at Yahoo! Shopping. rank: 3181, collection: endreZ. body: ...bikes, ski, fishing, bowling Team Sports 6508 **Basketball** from 368 stores Show me: 1 product per store...Finder: Sport: Product: Brand: Price: \$ to \$ **Basketball**:NCAA Portable **Basketball** Hoop NCAA Portable **Basketball** Hoop Get a game... url: shopping.yahoo.com/...b_basketball_27930281 (new window) modified: Tue Jan 06 13:50:22 CET 2004 size: 72604 Similar Find Refine Exclude
 - 2.** title: Basketball - Fan Gear and Memorabilia - Sports and Outdoors - Compare Prices, Read Reviews at Yahoo! Shopping. rank: 3178, collection: endreZ. body: ...bowling Fan Gear and Memorabilia 3916 **Basketball** from 224 stores Show me: 1 product...Sport: Product: Brand: Price: \$ to \$ **Basketball**:NBA Replica Jersey NBA Replica Jersey...Buyer Protection Review this merchant **Basketball**:Reebok USA **Basketball** Customized Replica... url: shopping.yahoo.com/...b_basketball_27930339 (new window) modified: Tue Jan 06 16:38:57 CET 2004 size: 80085 Similar Find Refine Exclude
 - 3.** title: Basketball Game Bombing Kills 10. rank: 2375, collection: endreZ. body: ...Science Oddly Enough Sport Reuters | AFP | Sky News | Photos Sunday January 4, 08:21 PM **Basketball** Game Bombing Kills 10 A bomb explosion at a **basketball** game in the southern Philippines has killed 10 people and wounded at least 40 others, including... url: uk.news.yahoo.com/...eiatw.html (new window) modified: Tue Jan 06 07:09:27 CET 2004 size: 15253 Similar Find Refine Exclude
 - 4.** title: NBA - Action Figures - Toys by Category - Toys and Baby - Compare Prices, Read Reviews at Yahoo! Shopping. rank: 1228, collection: endreZ. body: ...Protection Review this merchant more results from this store (5) compare NBA:Swish the **Basketball** Player Swish the **Basketball** Player Swish the **Basketball** Player's jumps shots and talented swishes make him king of the court. Bendable action... url: shopping.yahoo.com/...b_nba_21269556 (new window) modified: Tue Jan 06 16:56:35 CET 2004 size: 55560 Similar Find Refine Exclude

There are four main areas of the results page:

Document summaries

These show the information retrieved about the top hits. Each result comes with a set of meta fields and a set of data fields, as previously explained. Meta fields are to the left, and data fields to the right. In this example, the meta fields are 'rank' and 'collection'. The rank is a computed relevancy and is determined from factors such as where the search terms were found in the document, or how many times they occurred. Below the data fields are three links that can be clicked to find similar/dissimilar documents to the one in focus.

Categories

It is possible to browse a tree of categories that were found for the top N search results. By clicking on a link in the tree, a new search is performed, limiting the results to documents belonging to that part of the category tree.

Navigators

These are drop down boxes that offer drill downs in the results set. For instance, there is one drop down box for 'Language'. The box contains languages found for the top N hits (N is configurable) with the percentage of each language, and when the user selects a language, a new search is performed with this an additional search criterion. This way, the user can restrict the results based on analysis of a gradually smaller result set, until the desired document(s) turn up.

Top concepts

This is based on the distinguishing terms found from analyzing the top N hits. The most distinguishing concepts are listed first. By clicking on the links, a new search is performed with the phrased terms as an additional search term.